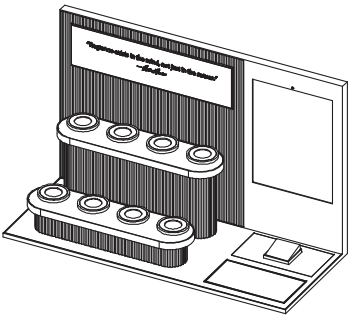
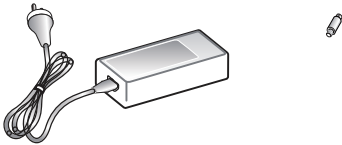


Contents: NEW PARTS



FullLineUnt LUX Large

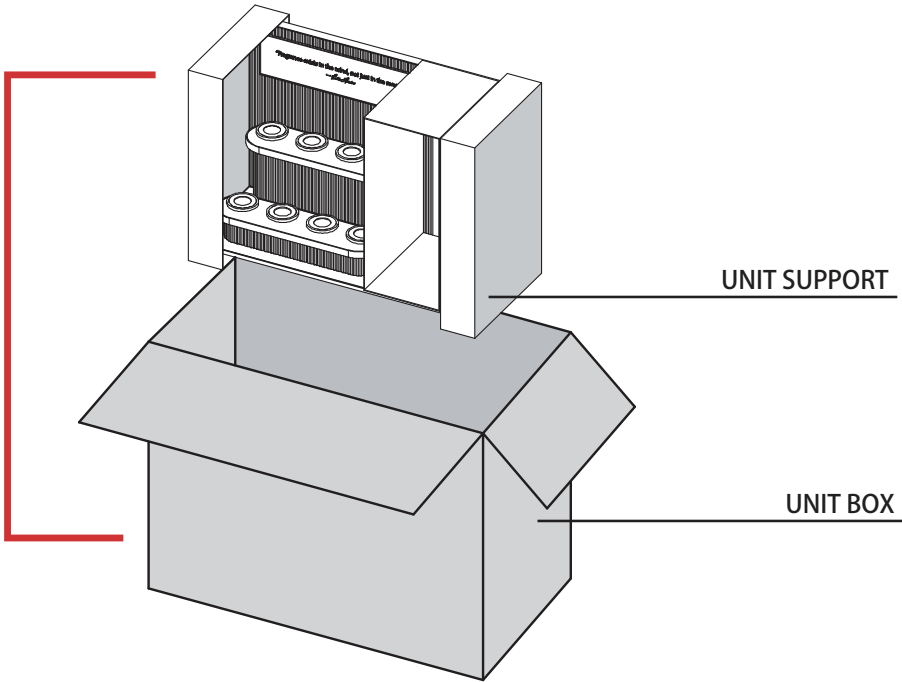


(1) Black Transformer 60W with Power Cable - UL Certified

Unpacking Instructions

Carefully remove all parts from the carton and place on a flat, secure area.
DO NOT DISCARD OR DESTROY ANY PACKING MATERIAL UNTIL THE UNIT HAS BEEN COMPLETELY ASSEMBLED.
2 PEOPLE ARE NEEDED TO UNPACK BOX

CARTON IS 100% RECYCLABLE MATERIAL, BE SURE TO RECYCLE AFTER UNPACKING UPDATE



Note

Should the contents of this shipment arrive damaged, please contact ELC Point of Sale Support at 1-844-387-1122 or pointofsalesupport@estee.com. Please provide photos of any damaged cartons, testers or parts with contact information including phone number and store address.

CAUTION: The light source of this luminaire is not replaceable; when the light source reaches its end of life the whole luminaire shall be replaced



TEMPLATE



PLEASE DO NOT DISCARD IN TRASH
RECYCLE ALL USED ACRYLIC TEMPLATES

Cleaning Instructions: Do not use ammonia-based cleaners or commercial glass / counter cleaners.
Use Clorox Disinfecting Wet Wipes or Purell Sanitizing Spray and dry off with a microfiber cloth.



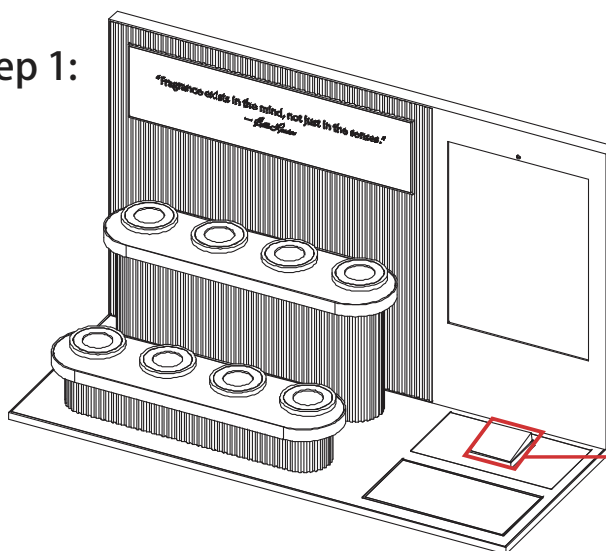
Assembly Instructions

Do not discard or destroy any packing material until the unit has been completely assembled.

UPDATE NEW:

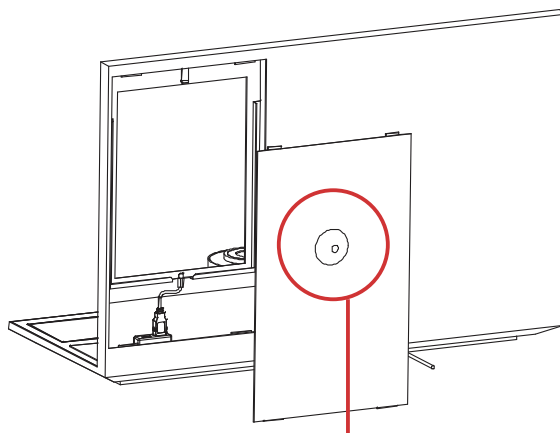
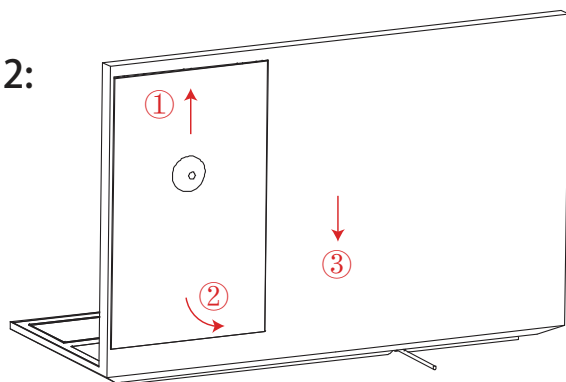
1. Remove full Unit from box and place on counter, be sure small wire is visible at the back of the unit.
2. Remove the back cover by suction cup according to the steps shown in the photo.
3. Install the IPAD as shown in the photo and connect with Type-C plug.
4. Finally, install the back cover as shown in the photo.
5. Plug in Transformer to this wire.
6. Plug the Power Cable into an outlet.

Step 1:



BLOTTER CARDS SHIPPING
SEPARATELY, CODE #PWJN-70

Step 2:



PLEASE KEEP THE SUCTION IN STORE IN CASE IPAD REPLACEMENT OR MAINTENANCE.

- ① Lift up in the direction of the arrow.
- ② Pull the bottom outward in the direction of the arrow.
- ③ Press the arrow down to remove the back plate.

Note

Should the contents of this shipment arrive damaged, please contact ELC Point of Sale Support at 1-844-387-1122 or pointofsalesupport@estee.com. Please provide photos of any damaged cartons, testers or parts with contact information including phone number and store address.

CAUTION: The light source of this luminaire is not replaceable; when the light source reaches its end of life the whole luminaire shall be replaced



TEMPLATE



PLEASE DO NOT DISCARD IN TRASH
RECYCLE ALL USED ACRYLIC TEMPLATES

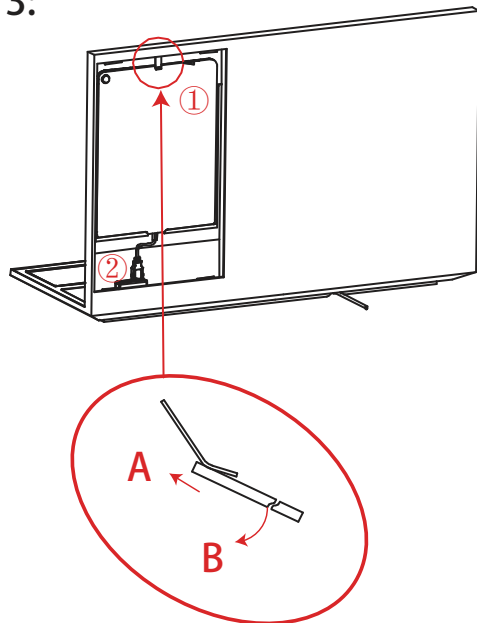
Cleaning Instructions: Do not use ammonia-based cleaners or commercial glass / counter cleaners.
Use Clorox Disinfecting Wet Wipes or Purell Sanitizing Spray and dry off with a microfiber cloth.



Assembly Instructions

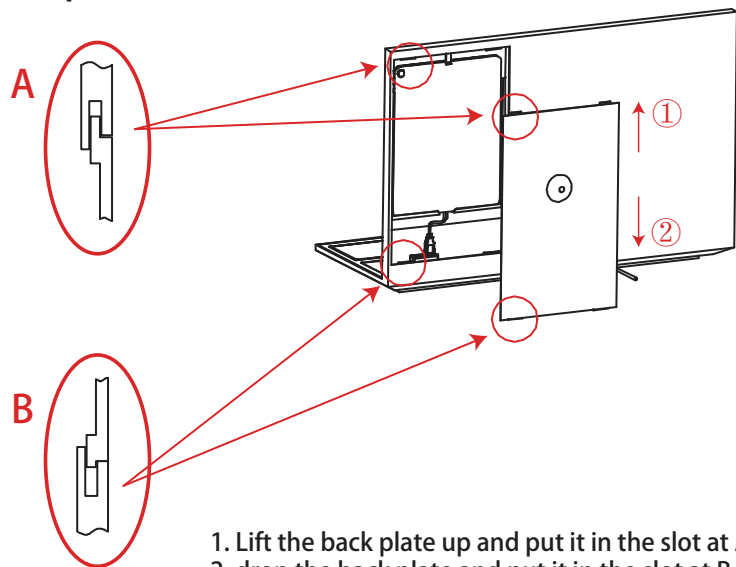
Do not discard or destroy any packing material until the unit has been completely assembled.

Step 3:



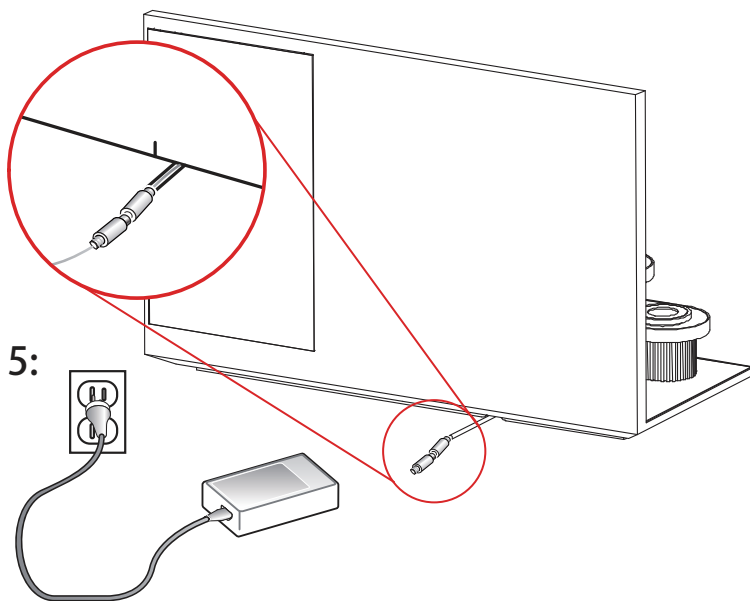
1. Push the IPAD up as shown by the arrow A, so that it is clamped in the elastic clip, and the bottom is placed in the lower slot as shown by the arrow B.
2. connect with Type-C plug.

Step 4:

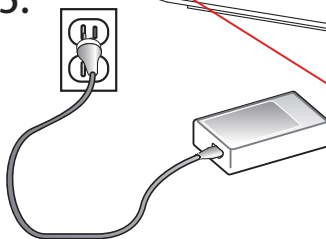


1. Lift the back plate up and put it in the slot at A.
2. drop the back plate and put it in the slot at B.

Step 6:



Step 5:



Note

Should the contents of this shipment arrive damaged, please contact ELC Point of Sale Support at 1-844-387-1122 or pointofsalesupport@estee.com. Please provide photos of any damaged cartons, testers or parts with contact information including phone number and store address.

CAUTION: The light source of this luminaire is not replaceable; when the light source reaches its end of life the whole luminaire shall be replaced



TEMPLATE



PLEASE DO NOT DISCARD IN TRASH
RECYCLE ALL USED ACRYLIC TEMPLATES

Cleaning Instructions: Do not use ammonia-based cleaners or commercial glass / counter cleaners.
Use Clorox Disinfecting Wet Wipes or Purell Sanitizing Spray and dry off with a microfiber cloth.



Updated Unit



- a. This product is only suitable for dry environment.
- b. Assembly or reassemble please read this file.
- c. The Installation instructions applies to all parts of the p roduct.
- d. Installation instructions according to the graphic + writin g ways.

Note

Should the contents of this shipment arrive damaged, please contact ELC Point of Sale Support at 1-844-387-1122 or pointofsalesupport@estee.com
 Please provide photos of any damaged cartons, testers or parts with contact information including phone number and store address.

CAUTION: The light source of this luminaire is not replaceable; when the light source reaches its end of life the whole luminaire shall be replaced



TEMPLATE



PLEASE DO NOT DISCARD IN TRASH
RECYCLE ALL USED ACRYLIC TEMPLATES

Cleaning Instructions: Do not use ammonia-based cleaners or commercial glass / counter cleaners.
 Use Clorox Disinfecting Wet Wipes or Purell Sanitizing Spray and dry off with a microfiber cloth.

